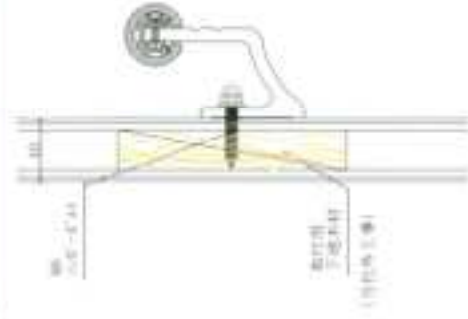
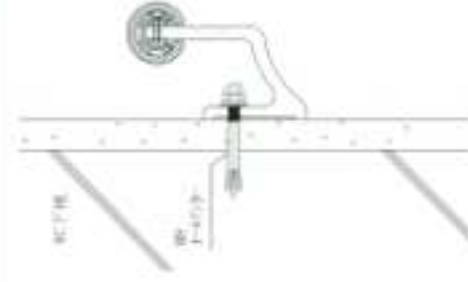


7-10 鋼板埋設



鋼板埋設 (鋼板)



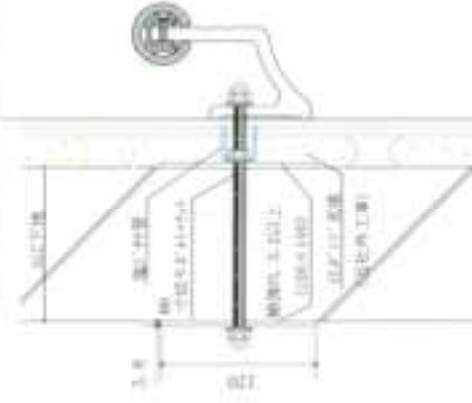
木片埋設 (木片)



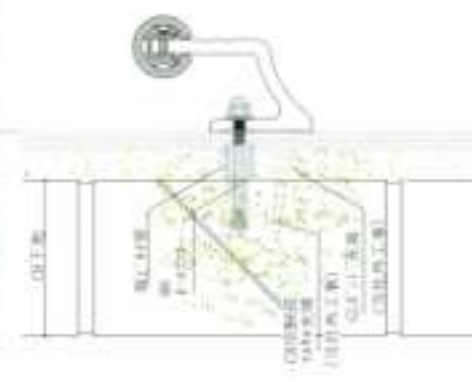
鋼板埋設



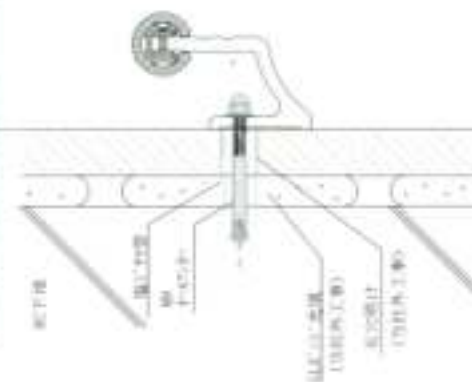
鋼板埋設 (鋼板) 埋設工事



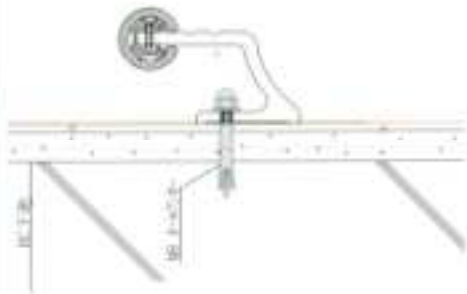
鋼板埋設 (鋼板)



鋼板埋設 (鋼板) 埋設工事



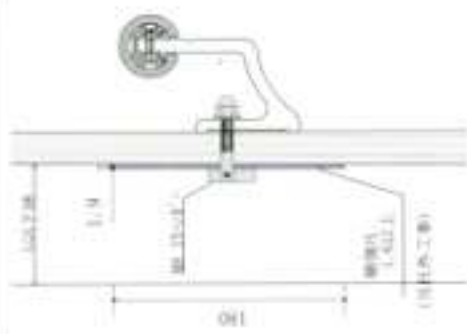
鋼板埋設 (鋼板)



鋼板埋設 (鋼板)



鋼板埋設 (鋼板)



鋼板埋設 (鋼板)

